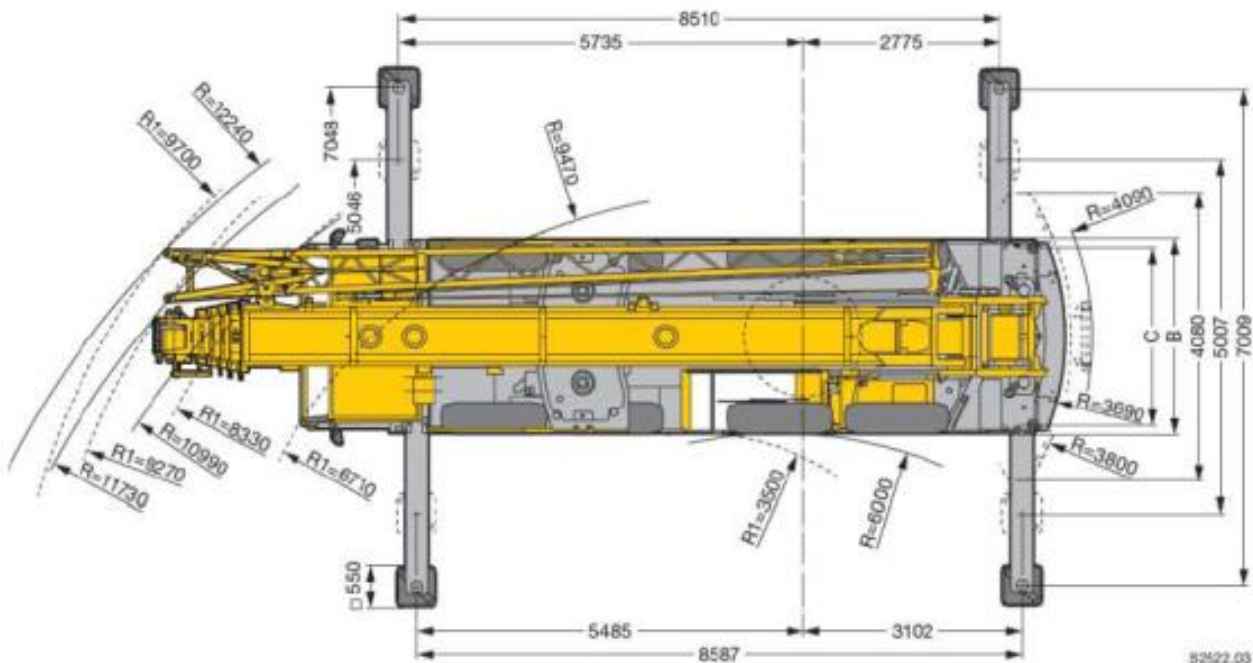
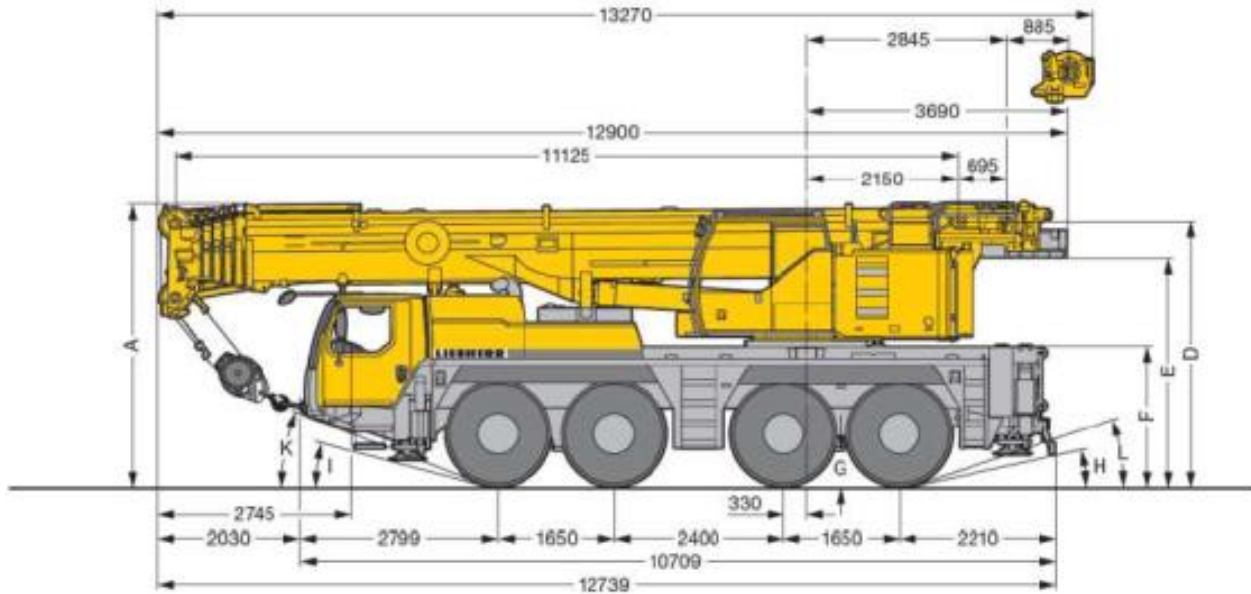




LIEBHERR LTM 1090 - 4.1



R₁ = Allradlenkung - All-wheel steering - Direction toutes roues - Tutti gli assi sterzanti - Dirección en todos los ejes - Поворот всеми осями

	Maße - Dimensions - Encombrement - Dimensioni - Dimensiones - Размеры mm											
	A	A	B	C	D	E	F	G	H	I	K	L
	100 mm*											
385/95 R 25 (14.00 R 25)	3905	3805	2750	2350	3665	3150	1890	370	10°	11°	18°	16°
445/95 R 25 (16.00 R 25)	3955	3855	2750	2310	3715	3200	1940	420	11°	13°	20°	17°
525/80 R 25 (20.5 R 25)	3955	3855	2980	2440	3715	3200	1940	420	11°	13°	20°	17°

* abgelenkt - lowered - abbasse - abbassato - suspension abajó - вращены осью